

ARTS & CULTURE FACILITY PLAN AND CONCEPTUAL DESIGN

Town of Stony Plain

REPORT

December 2019

EXECUTIVE SUMMARY



Arts and cultural activities and pursuits have long been important to residents and visitors to Stony Plain. This can be seen quite readily through the many initiatives both large and small. There has long been a call to develop cultural facilities in Stony Plain as a means of preserving the rich culture of the community and also as a means of supporting and strengthening the local arts and culture community. This report confirms the clustering of cultural facilities should be considered. It also presents conceptual options to meet the needs of the local arts and cultural community.

The Town of Stony Plain has completed several studies and plans that reference and support the development of arts and cultural spaces. Both the City of Spruce Grove and Parkland County have developed studies and plans that, to varying degrees, shine some light on the need for arts and culture spaces in the broader tri-municipal area. While this particular study is specific to the Town of Stony Plain, the concept of municipal boundaries for arts and cultural groups is not as structured as it is for many municipal services and programs.

A regional inventory of arts and culture spaces in Stony Plain and the broader tri-municipal region was completed. The inventory primarily includes facilities with a significant role in satisfying the need for arts and culture spaces. While there is a variety of spaces in the area, there is not a single dedicated space that serves as a cohesive arts and cultural centre in which a range of artists can come together to create.

A diverse program of community engagement was implemented to gather the thoughts and perspectives of community residents as well as local arts and culture stakeholders. Encompassing surveys and discussion sessions, the engagement findings highlighted the importance of arts and cultural activities, programs, events, and services. The need for classrooms, retail spaces, workshops / studios, and galleries was articulated.

TABLE OF CONTENTS



CONTENTS

1	INTRODUCTION	1
2	PLAN REVIEW.	2
	2.1 TOWN OF STONY PLAIN	3
	2.2 CITY OF SPRUCE GROVE	6
	2.3 PARKLAND COUNTY	7
	2.4 CONCLUSIONS.	8
3	REGIONAL INVENTORY.	9
	3.1 STONY PLAIN	10
	3.2 SPRUCE GROVE	13
	3.3 PARKLAND COUNTY	16
	3.4 CONCLUSIONS.	20
4	ENGAGEMENT SYNOPSIS.	21
	4.1 POP-UP SURVEYS	22
	4.2 STAKEHOLDER DISCUSSION SESSIONS	24
	4.3 CONCLUSIONS	26
5	RECOMMENDED FACILITY PROGRAM	27
6	POTENTIAL FACILITY SOLUTIONS	29
	6.1 NEW BUILD OPTION	31
	6.2 RENOVATION / PURCHASE EXISTING OPTION	35
7	REPORT CONCLUSIONS & NEXT STEPS	38

APPENDIX

	ADDITIONAL CONCEPT BUBBLE DIAGRAMS.	40
--	--	-----------

INTRODUCTION

Arts and cultural activities and pursuits have long been important to residents and visitors to Stony Plain. This can be seen quite readily through the many initiatives both large and small including (but not limited to):

- the large murals throughout Stony Plain depicting the community's history;
- the many musical events hosted (including the Town's free Summer Sessions);
- the Public Art Policy and program; and
- the Town's Cultural Roundtable which provides advice on policies, programs and facilities for the development of local arts and culture within Stony Plain.

There has long been a call to develop cultural facilities in Stony Plain as a means of preserving the rich culture of the community and also as a means of supporting and strengthening the local arts and culture community.

This report confirms the clustering of cultural facilities be considered and presents conceptual options to meet the needs of the local arts and cultural community. These options are developed to be complementary to existing facilities in Stony Plain and the tri-municipal region; to leverage the cultural planning that has been completed by the region's municipalities; and to reflect the input of sector stakeholders.

Specifically this report presents an overview of the pertinent planning documents of the Town of Stony Plain with reference to City of Spruce Grove and Parkland County cultural documents. An inventory of arts and cultural facilities in the tri-municipal region was completed in addition to engagement with community residents and cultural stakeholders. A synopsis of findings is presented herein. Finally a recommended facility program is presented along with a facility concept "bubble" diagram. The bubble diagram represents the potential spaces to be considered for future development and clustering. Two potential facility development options are discussed that will aid in a realised: new build and renovation of an existing building. An estimated class "d" capital cost has been illustrated with each option.



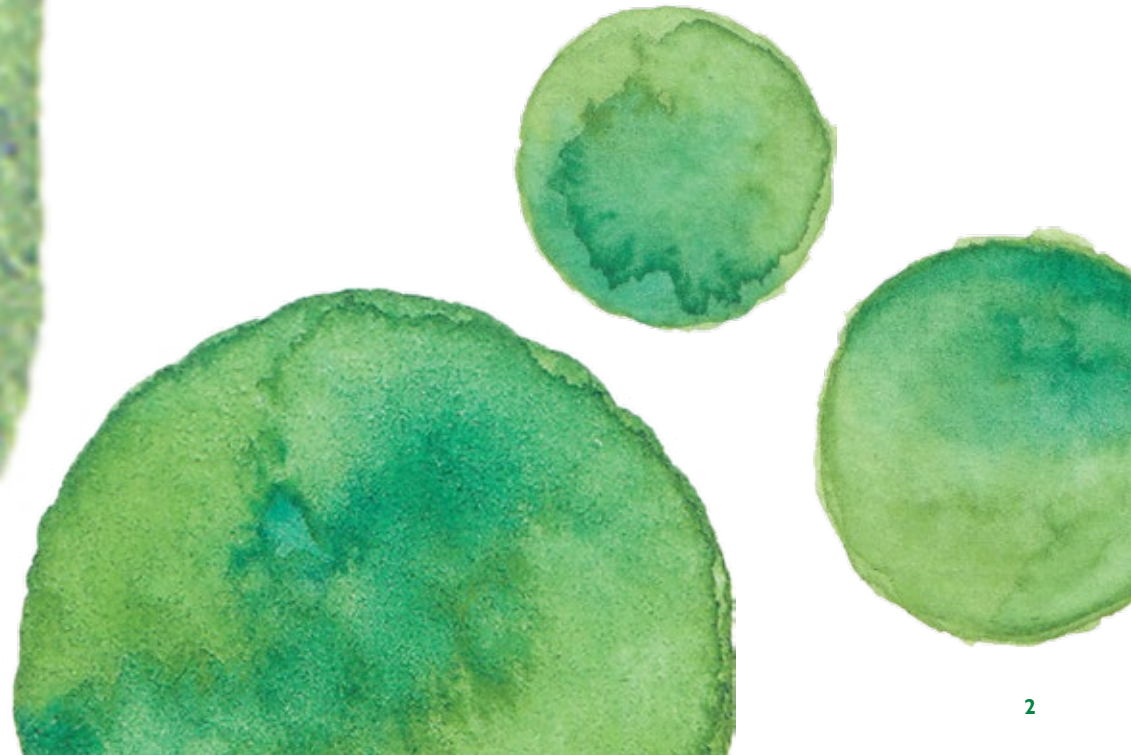
PLAN REVIEW

2



The Town of Stony Plain has completed several studies and plans that reference and support the development of arts and culture spaces. These documents speak to the need for further exploration of this type of facility; they also provide some insight into the types of spaces that a potential facility may include. A document overview is presented below.

Both the City of Spruce Grove and Parkland County have developed studies and plans that, to varying degrees, shine some light on the need for arts and culture spaces in the broader tri-municipal area. While this particular study is specific to the Town of Stony Plain, the concept of municipal boundaries for arts and cultural groups is not as structured as it is for many municipal services and programs. Groups and individuals freely move around to meet their needs for practice, preparation, and performance space. Understanding how regional partners are viewing arts and culture and the future focus they may have can expose areas of alignment and a more coordinated approach. As such overviews of pertinent studies and plans of the City and County are presented below.



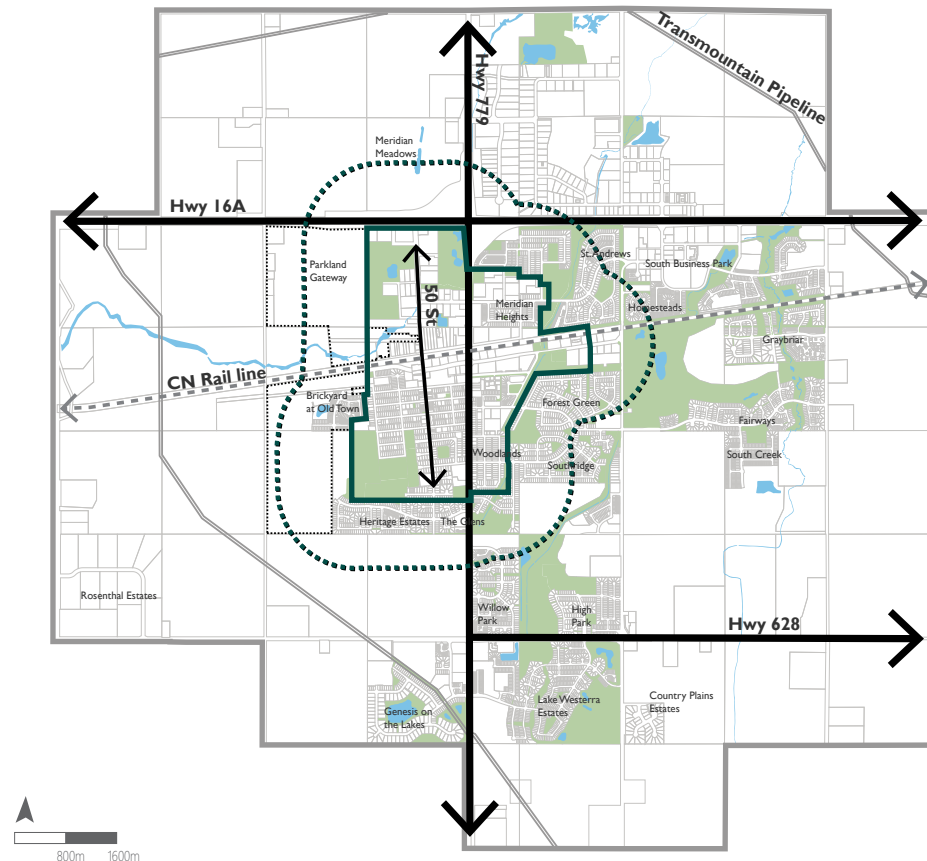
2.1 TOWN OF STONY PLAIN

OLD TOWN COMMUNITY PLAN (2019)

The purpose of the Old Town Community Plan (OTCP) is to “....provide a cohesive vision, policy framework and implementation plan to guide future development and redevelopment of the OTCP area.” The OTCP area includes the town’s oldest areas including Main Street and many of the community’s important facilities including the Glenn Hall Arena, the Multicultural Heritage Centre, and Heritage Park. Specifically related to arts and culture, the OTCP provides a plan showing how the development of the Recreation and Cultural Campus will integrate into the surrounding neighbourhoods.

The OTCP identifies a Recreation and Cultural Campus in the south west portion of the Old Town area. It includes several facilities such as the Glenn Hall Arena, the Multicultural Heritage Centre and the P.E.R.C. Building. The Vision of the plan suggests that the OTCP area will “...continue to be the vibrant social, cultural and commercial heart of Stony Plain for locals and visitors alike.” The Plan identifies several character areas within the OTCP area each with appropriate building typologies.

THE OLD TOWN COMMUNITY PLAN AREA

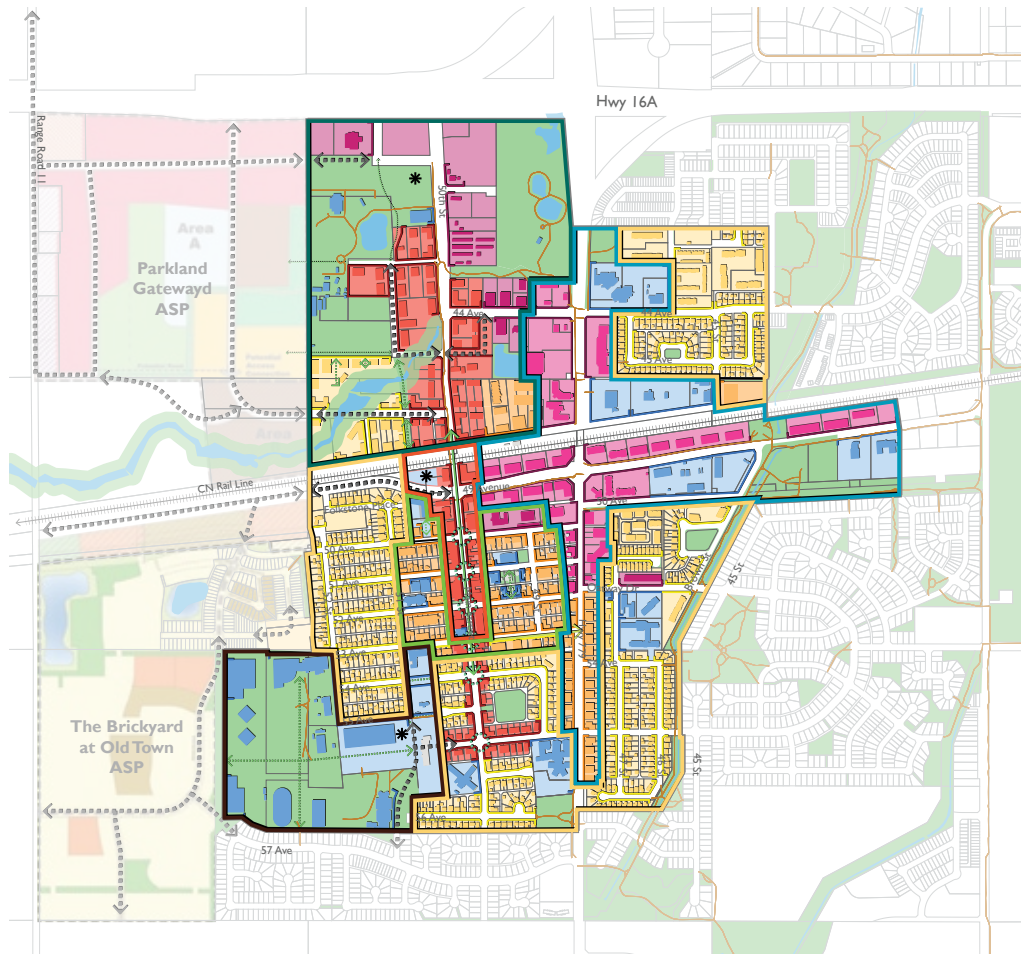


Legend

- Old Town Community Plan Boundary
- Old Town Community Plan Area of Influence
- Neighbouring Area Structure Plan
- Town of Stony Plain Boundary
- Open Space
- Main Street/50 Street Corridor
- Railway
- Provincial Highway
- Pipeline Corridor
- Water Body



RECREATION AND CULTURAL CAMPUS IN THE OLD TOWN COMMUNITY PLAN AREA



Legend

- | | | |
|--------------------------------|-----------------------|---------------------------------------|
| Main Street Area | Commercial Mixed-Use | Primary Public Realm Improvement |
| Town Core Area | Commercial | Mid-block Pedestrian Connection/Trail |
| Old Town North | Institutional | New Street |
| Recreation and Cultural Campus | Residential | Key Nodes |
| Highway Commercial Corridor | Residential Mixed-Use | Transportation Hub |
| Mature Residential Areas | Open Space | |



BUILDING TYPOLOGIES IN THE AREAS

Old Town North Character Area – could include community facilities.

Main Street Character Area – could include community facilities as it supports Main Street as the social, cultural and business hub.

Town Core Character Area – development of a public gathering place for local events is encouraged.

Mature Residential Character Area – no reference to development of an arts and cultural facility.

Recreation and Cultural Campus – could include cultural facilities and is noted as a significant destination for residents and visitors.

Highway Commercial Character Area – could include community facilities (north of 52 Avenue).

The OTCP references social infrastructure (Section 7.10.) and specifically mentions Cultural Spaces.

7.10.5. The development of a museum or additional cultural space within the OTCP area to provide space for historical and contemporary cultural events will be explored in conjunction with the ongoing development of the Recreation and Cultural Campus.

STONY PLAIN CULTURAL MASTER PLAN (2012)

The Master Plan was viewed as a tool to help establish a shared vision that identified priorities for strengthening the cultural sector and advancing cultural development in the town. One of the recommended actions in the Plan is noted below.

15b. Address Cultural Facility Needs specifically addressing the gaps in cultural facilities.

- » A new central cultural facility could be a focal point for cultural activity and help brand Stony Plain as a cultural destination.
- » Additional performing arts space.
- » A new facility for the Public Library that is quickly outgrowing its current location.
- » A potential consolidated community archives.

23. Provide Spaces for Artists and Creative Enterprises in the Downtown.

24. Establish a Shared Administrative Facility in the Downtown.

The capture recommendation further confirms the need for arts and culture space is a desired and important need in the community. It should be The Town of Stony Plain is currently working with Stony Plain Active Adult Living in the construction of a new library scheduled to open in the fall of 2020.

TARGET SECTOR STUDY & MARKETING PLAN (2015)

The intent of this study was to examine Stony Plain's assets, industry base and workforce, competitive environment, liabilities, and other factors, leading to recommendations for targeted growth opportunities and a marketing strategy. One of the five industry targets presented is "Destination Shopping, Dining, Arts, and Culture".

The report speaks to the economic impact of the arts citing studies that show the spending on arts and culture is more than double what the typical Canadian spends on sporting events. Further, the report estimates that there is more than \$62 million in market potential for art, antiques and decorative ware within 100 km of Stony Plain and that in excess of \$22 million in spending on arts and craft materials is generated in the same area. The plan even references the creation of artist studios and gallery space in Stony Plain.

2.2 CITY OF SPRUCE GROVE

CITY OF SPRUCE GROVE CULTURAL MASTER PLAN (2016)

Completed in 2016, the Cultural Master Plan had an objective, “(t)o identify arts, culture and heritage resources in Spruce Grove today and to map out a vision for developing those resources over the next five years and beyond.” The Plan includes a vision, guiding principles and five strategic directions. Particularly relevant Strategic Directions and specific tasks related to the engagement work Stony Plain has undertaken are noted below.

Strategic Direction #1: Building Cultural Capacity

Action 3. Build Community Capacity

Task 3.2 Establish a Cultural Resource Centre similar to the Recreation Resource Centre to support sustainability and capacity building in the cultural sector. Examine the potential to extend the Recreation Resource Centre to address cultural sector needs.

Action 4. Strengthen Municipal Collaboration

Establish a Tri-Municipal cultural leadership group to extend existing cultural collaboration across the three municipalities. Ensure both municipal and culture sector representation.

Strategic Direction #3: Support City Centre Revitalization

Action 7. Establish Small Scale Cultural Spaces

Task 7.1 Identify empty or underutilized spaces in buildings in the City Centre as locations for artists’ studios. With sufficient space, an artists’

co-op could be formed to exhibit and support the work of a range of Spruce Grove visual artists.

Task 7.3 Support growth in creative cultural industries by using underutilized space as a shared work space.

Task 7.4 In response to the call for a smaller performing arts venue than Horizon Stage, consider constructing a small “black box” theatre for use by cultural groups and to support programming in the City Centre.

Task 7.6 Work toward establishing a critical mass of cultural facilities and activities in order to create a Culture District with amenities within easy walking distance from one another.

Action 8. Investigate the Potential for a Cultural Centre as a Catalyst for Revitalization

Task 8.2 Undertake a feasibility study for building a Cultural Centre in the City Centre.

Strategic Direction #5: Support Cultural Programs and Facilities

Action 11. Increase Access to Cultural Facilities / Spaces

Task 11.1 In considering the feasibility of a multi-purpose Cultural Centre examine the potential of it including a large performing arts facility (550-800 seats) equipped with ample front of house amenities and reception centre. Other elements could be a new location for the Library and an art gallery or exhibition space for visual arts.

2.3 PARKLAND COUNTY

PARKLAND COUNTY PARKS, RECREATION AND CULTURAL MASTER PLAN (2017)

The Master Plan provides long term direction for parks, recreation and culture services for ten years. The Plan states that, "...it is unlikely and impractical for the County itself to establish any major new cultural facilities. Existing community association and halls, together with schools and libraries, will remain the primary cultural venues or facilities." As it relates to community halls there was suggestion that some halls could incorporate:

- Small exhibition spaces for visual arts or heritage displays.
- Digital media and sound/ video recording facilities and equipment.
- Makers labs.
- Small performance spaces / venues.

The inclusion of the aforementioned elements in halls would be considered on a case by case basis. As well these types of upgrades could be considered in schools and libraries.



2.4 CONCLUSIONS

Several overriding conclusions can be drawn from the each of reports and plans completed by the municipal regional partners. There are several alignments in each of the plans. The concepts most aligned are:

- Location of any new arts & culture facility in Stony Plain should be considered in the Old Town Community Plan area.
- A cohesive arts & culture facility is a suggested approach in both Stony Plain and Spruce Grove; this facility would consist of a number of spaces including exhibition and creative space.
- While the City of Spruce Grove's Master Plan was developed solely for that municipality it does recommend the development of a small black box theatre and a large performing arts facility. The Stony Plain plan also identified performance space considerations. This suggests there is a need to continue exploring performance spaces in the area.
- Parkland County's Master Plan is developed for its municipality. Yet there is some suggestion of the need for creative and small performance space that may be developed in the broader community through community partnerships.
- Arts and culture can provide a significant economic impact in the area.

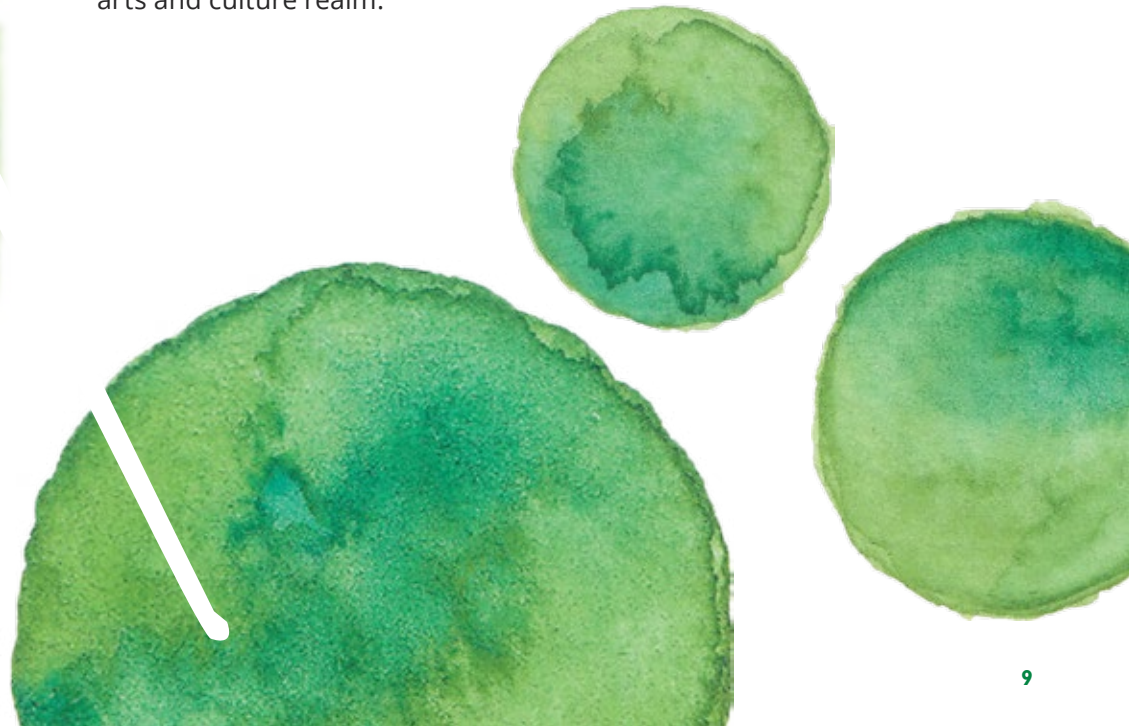


REGIONAL INVENTORY

An examination of the inventory of arts & culture spaces in Stony Plain and the broader tri-municipal region was undertaken. While the Town of Stony Plain is considering the development of arts & culture spaces to meet the needs of its community, neither artists nor patrons of art and culture are restricted by municipal boundaries. As such an examination of the regional inventory may provide some direction and insight to potential spaces that may advance the development of arts and cultural facilities.

The inventory undertaken primarily includes facilities with a significant role to play in satisfying the need for arts & culture spaces. Almost any space can serve as an art and culture space; each discipline has defined needs, however most are flexible enough to manage in most spaces available and still provide tremendous outcomes. The facilities identified in this inventory are those that would commonly be seen as serving an arts & culture purpose. It is important to note that the following inventory includes only those spaces directly provided or supported publicly and those provided by not-for-profit groups in the area. There are also private businesses in the region that provide space and offer programming in the arts and culture realm.

3



3.1 STONY PLAIN

The following table identifies public, publicly supported, or non profit facilities in Stony Plain that enable arts & culture activities to occur.

Facility Name	Primary Amenities	Secondary Amenities
1. Crooked Pot Gallery & Potters Guild	<ul style="list-style-type: none"> • Gallery space open to the public, offering items for sale made by local artists; • Large studio space has two electric kilns, a gas kiln and various equipment for use by members 	<ul style="list-style-type: none"> • N/A
2. Heritage Park	<ul style="list-style-type: none"> • 14,000 square foot pavilion • 7,000 square foot multipurpose room • 6,500 square foot banquet hall. • Pavilion has a full concession <ul style="list-style-type: none"> » Spruce Grove Hall has a capacity of 460 for banquets and 775 for theatre style events. » Parkland Hall has capacity of 400 for banquets and 650 for theatre style events. » Both of the halls have A/V equipment and commercial kitchen space » Lion's Den enables meetings and gatherings of smaller sizes • Blueberry Outdoor Stage 	<ul style="list-style-type: none"> • N/A
3. KaRAR Performing Arts	<ul style="list-style-type: none"> • Non-profit performing arts organization provides classes, workshops and productions • Has three large studio spaces, <ul style="list-style-type: none"> » One of which has a backstage/performance stage, and equipment storage. 	<ul style="list-style-type: none"> • Party room and studio space. • It is the current home of Engage Church.

Facility Name	Primary Amenities	Secondary Amenities
4. Multicultural Heritage Centre	<ul style="list-style-type: none"> • Public art gallery space on the main floor and a secondary, smaller gallery space on the lower floor • “Settlers Cabin” provides museum space illustrating life during the ‘frontier’ era in Stony Plain <ul style="list-style-type: none"> » Also contains a small library space (Wild Rose Library) • P.E.R.C. Gym and classrooms are rentable, capacities unknown; <ul style="list-style-type: none"> » Outdoor amphitheatre 	<ul style="list-style-type: none"> • Red Brick Eatery provides food services • An ‘artisan market’ at the Centre • Archives • Community gardens • Mural tours
5. Stony Plain Community Centre	<ul style="list-style-type: none"> • 8,250 square foot facility available for public bookings; <ul style="list-style-type: none"> » Main hall capacity of 225 for banquets and 300 for theatre-style events; » Large auditorium, curtained stage. 	<ul style="list-style-type: none"> • N/A
6. Stony Plain and Parkland Pioneer Museum	<ul style="list-style-type: none"> • 14 acre site comprised of heritage buildings <ul style="list-style-type: none"> » 3 interpretive houses, church, school, teacher’s cottage, replica blacksmith shop and trappers cabin, 1910 town hall replica, sawmill, machinery and equipment display building) » Brightbank Church is available for weddings, with a seating capacity of 70; » Warden School also available for rent. » Founders’ Building has a 200 seat capacity; » Resource Room is also in the Founders Building and can seat 30 people 	<ul style="list-style-type: none"> • Pioneer Museum Tea House operated by volunteers, <ul style="list-style-type: none"> » Open May - September, offers tea and food services, as well as catering
7. Stony Plain Public Library	<ul style="list-style-type: none"> • Catalog of more than 55,000 items • Two meeting rooms are available <ul style="list-style-type: none"> » One with a capacity of 20 and the other with a capacity of 36 	<ul style="list-style-type: none"> • 3D Printer and computers
8. TransAlta Tri-Leisure Centre* <i>*Owned by the Town of Stony Plain, City of Spruce Grove, and Parkland County</i>	<ul style="list-style-type: none"> • Major indoor leisure centre with ice arenas, indoor fields, aquatic centre and track <ul style="list-style-type: none"> » Has hosted larger music concerts on the fieldhouse floors capacity of 1400 	<ul style="list-style-type: none"> • Two multipurpose meeting rooms are bookable <ul style="list-style-type: none"> » One accommodates 20 and the other 35.

STONY PLAIN

LEGEND

- 1 - Crooked Pot Gallery & Potters Guild
- 2 - Heritage Park
- 3 - KaRAR Performing Arts
- 4 - Multicultural Heritage Centre
- 5 - Stony Plain Community Centre
- 6 - Stony Plain and Parkland Pioneer Museum
- 7 - Stony Plain Public Library
- 8 - TransAlta Tri-Leisure Centre



3.2 SPRUCE GROVE

The following table identifies public, publicly supported, or non profit facilities in Spruce Grove that enable arts & culture activities to occur.

Facility Name	Primary Amenities	Secondary Amenities
1. ARPI North Rec Hub	<ul style="list-style-type: none"> • Computer stations; printer; • Spruce Grove Public Library collection; • non-bookable meeting spaces 	<ul style="list-style-type: none"> • N/A
2. Horizon Stage Performing Arts Centre	<ul style="list-style-type: none"> • 318 seat auditorium with stage; • Professional sound and lighting; • Two dressing rooms with washrooms; • Self-contained lobby and concession; • Large screen suitable for film or other professionals; professional on-site theatre technician 	<ul style="list-style-type: none"> • Composite High School Lounge (evening and weekends only)
3. Melcor Cultural Centre	<ul style="list-style-type: none"> • Houses both the Public Library and the Allied Arts Council (Art Gallery) 	<ul style="list-style-type: none"> • Co-located with the Art Gallery in the Melcor Cultural Centre; • Shares use of the Program Room and meeting room spaces with the Art Gallery
4. Spruce Grove Art Gallery	<ul style="list-style-type: none"> • Visual art gallery space 	<ul style="list-style-type: none"> • Co-located with the library in the Melcor Cultural Centre; • Shares use of the Program Room and meeting room spaces with the Library.
5. Spruce Grove City Hall	<ul style="list-style-type: none"> • Home to much of the municipality's public art collection 	<ul style="list-style-type: none"> • N/A
6. Spruce Grove Grain Elevator Museum	<ul style="list-style-type: none"> • Displays artifacts related to the history of Spruce Grove and maintains a grain elevator that has been fully restored and functions as a museum site. Farmers market is hosted on site. 	<ul style="list-style-type: none"> • Spruce Grove Archives also housed on site, housing archival material of Spruce Grove's history
7. Spruce Grove Pioneer Centre	<ul style="list-style-type: none"> » One large hall / gymnasium space; » One smaller classroom sized room 	<ul style="list-style-type: none"> • N/A

Facility Name	Primary Amenities	Secondary Amenities
8. Spruce Grove Public Library	<ul style="list-style-type: none"> • “Innovation Lab” that provides members with access to technology including: <ul style="list-style-type: none"> » Two 3D printers and a VR headset; » Several video game consoles; » Sensory backpacks and vision tent for children with special needs; » Collection of more than 70k items, 10k+ online items; » 12 public computers; 	<ul style="list-style-type: none"> • Program room: 25 chairs and 15 tables; • Meeting room A: 16 chairs and 6 tables; • Meeting Room B: 10 chairs and 4 tables (A/V); • Meeting Room C: 10 chairs and 4 tables (A/V and kitchenette)
9. TransAlta Tri-Leisure Centre* <i>*Owned by the Town of Stony Plain, City of Spruce Grove, and Parkland County</i>	<ul style="list-style-type: none"> • Major indoor leisure centre with ice arenas, indoor fields, aquatic centre and track <ul style="list-style-type: none"> » Has hosted larger music concerts on the fieldhouse floors capacity of 1400 	<ul style="list-style-type: none"> • Two multipurpose meeting rooms are bookable <ul style="list-style-type: none"> » One accommodates 20 and the other 35.



SPRUCE GROVE



LEGEND

- 1 - ARPI North Rec Hub
- 2 - Horizon Stage Performing Arts Centre
- 3 - Melcor Cultural Centre
- 4 - Spruce Grove Art Gallery
- 5 - Spruce Grove City Hall
- 6 - Spruce Grove Grain Elevator Museum
- 7 - Spruce Grove Pioneer Centre
- 8 - Spruce Grove Public Library
- 9 - TransAlta Tri-Leisure Centre

3.3 PARKLAND COUNTY

The following table identifies public, publicly supported, or non profit facilities in Parkland County that enable arts & culture activities to occur.

Facility Name	Primary Amenities	Secondary Amenities
1. Duffield Library	<ul style="list-style-type: none"> • Collections and community programming 	<ul style="list-style-type: none"> • Located in Duffield School
2. Entwistle Library	<ul style="list-style-type: none"> • Collections and community programming 	<ul style="list-style-type: none"> • Located in Entwistle Public Library
3. Keephills Library	<ul style="list-style-type: none"> • Collections and community programming 	<ul style="list-style-type: none"> • Attached to the Keephills Community Centre
4. Seba Beach Museum	<ul style="list-style-type: none"> • Displays local artifacts in main gallery space, • Open weekends in June 	<ul style="list-style-type: none"> • N/A
5. Tipple Park Museum	<ul style="list-style-type: none"> • Main gallery hall displays temporary exhibits, including artwork and other historical displays; • Rental space is available, including meeting rooms • A kitchen space for larger events 	<ul style="list-style-type: none"> • N/A
6. Tomahawk Library	<ul style="list-style-type: none"> • Collections and community programming 	<ul style="list-style-type: none"> • Located in Tomahawk School
7. TransAlta Tri-Leisure Centre* <i>*Owned by the Town of Stony Plain, City of Spruce Grove, and Parkland County</i>	<ul style="list-style-type: none"> • Major indoor leisure centre with ice arenas, indoor fields, aquatic centre and track <ul style="list-style-type: none"> » Has hosted larger music concerts on the fieldhouse floors capacity of 1400 	<ul style="list-style-type: none"> • Two multipurpose meeting rooms are bookable <ul style="list-style-type: none"> » One accommodates 20 and the other 35.
8. Wabamun & District Museum	<ul style="list-style-type: none"> • Displays local artifacts and other objects/pictures, museum is open seasonally 	<ul style="list-style-type: none"> • N/A

The following table lists the community halls in Parkland County. All of these halls are operated by a not-for-profit organization but are publicly supported to some degree by the County. As noted in the Parkland County Parks, Recreation and Cultural Master Plan, the community halls can serve as venues for a variety of arts & cultural programming and events. In fact to some degree they all have served this purpose at some in their operational history.

Facility Name	Primary Amenities	Secondary Amenities
1. Blueberry Community Hall	<ul style="list-style-type: none"> • Seating capacity for 325, • Commercial kitchen and bar area 	<ul style="list-style-type: none"> • Playground, 2 ball diamonds, soccer fields, onsite camping
2. Brightbank Community Hall	<ul style="list-style-type: none"> • 100 person seating capacity without tables; 72 capacity with tables 	<ul style="list-style-type: none"> • Ball diamond, outdoor covered seating, onsite camping, riding arena
3. Carvel Hall	<ul style="list-style-type: none"> • Home to the Carvel Ukrainian Cultural Society, • 200 person capacity 	<ul style="list-style-type: none"> • N/A
4. Clymont Community Hall	<ul style="list-style-type: none"> • Main hall has a capacity of 300 people, • 94 for a south room • 100 for the north room • They have onsite catering and operate a playschool in its space 	<ul style="list-style-type: none"> • 3 ball diamonds, playground, outdoor hockey rink, onsite camping, memorial garden, outdoor covered seating
5. Duffield Community Hall	<ul style="list-style-type: none"> • Auditorium space 	<ul style="list-style-type: none"> • N/A
6. Entwistle Community Hall	<ul style="list-style-type: none"> • Can seat up to 250 people 	<ul style="list-style-type: none"> • N/A
7. Fallis Community Hall	<ul style="list-style-type: none"> • Auditorium space 	<ul style="list-style-type: none"> • Ball diamond and onsite camping
8. Garden Valley Community Hall	<ul style="list-style-type: none"> • Main hall (64x27) with seating capacity of 224 • Carpeted stage, • Kitchen and bar area 	<ul style="list-style-type: none"> • 3 ball diamonds and onsite camping
9. Golden Spike Community Centre	<ul style="list-style-type: none"> • Full kitchen, • Small stage, • Small seating area (unknown capacity) 	<ul style="list-style-type: none"> • Ball diamond, onsite camping
10. Graminia Community Hall	<ul style="list-style-type: none"> • 100 person capacity 	<ul style="list-style-type: none"> • Ball diamond, playground, onsite camping
11. Hansen's Corner Community Hall	<ul style="list-style-type: none"> • Auditorium space 	<ul style="list-style-type: none"> • Covered outdoor seating
12. Holborn Community Hall	<ul style="list-style-type: none"> • Auditorium space 	<ul style="list-style-type: none"> • Ball diamond, onsite camping, covered BBQ area

Facility Name	Primary Amenities	Secondary Amenities
13. Keephills Community Hall	<ul style="list-style-type: none"> • Large hall / gymnasium space (~30,000sq.ft) • Kitchen, bar space 	<ul style="list-style-type: none"> • Building also has a gymnasium and Parkland Library branch in County owned space. • Former school space owned by County (disposition of space being determined) • Outdoor space includes ball diamonds, outdoor rink
14. Magnolia Community Hall	<ul style="list-style-type: none"> • Auditorium space 	<ul style="list-style-type: none"> • Ball diamond, onsite camping
15. Manley Goodwill Community Hall	<ul style="list-style-type: none"> • Auditorium space 	<ul style="list-style-type: none"> • N/A
16. Moon Lake (Hoot Owl) Community Hall	<ul style="list-style-type: none"> • Auditorium space 	<ul style="list-style-type: none"> • Two ball diamonds, onsite camping
17. Muir Lake Community Hall	<ul style="list-style-type: none"> • 198 seating capacity, • Commercial kitchen, bar area, • Stage/podium, • Outdoor covered patio 	<ul style="list-style-type: none"> • 2 ball diamonds, playground, soccer field; running track, camping area
18. Parkland Village Community Centre	<ul style="list-style-type: none"> • 150 person hall capacity, <ul style="list-style-type: none"> » Seating for 120 upstairs and 80 people in the basement; • Built in PA system; • Industrial-grade kitchen and bar serving area 	<ul style="list-style-type: none"> • N/A
19. Rosenthal Community Hall	<ul style="list-style-type: none"> • Auditorium space and kitchen 	<ul style="list-style-type: none"> • Covered and uncovered outdoor seating, onsite camping
20. Sand Hills Community League	<ul style="list-style-type: none"> • Auditorium space with seating for 434 people without tables and 342 with tables 	<ul style="list-style-type: none"> • 3 ball diamonds, onsite camping
21. Smithfield Community Hall	<ul style="list-style-type: none"> • Auditorium space 	<ul style="list-style-type: none"> • Outdoor riding arena
22. Tomahawk and District Sports & Agra	<ul style="list-style-type: none"> • Large hall / gymnasium space 	<ul style="list-style-type: none"> • Ball diamonds
23. Westland Park Community Hall	<ul style="list-style-type: none"> • Auditorium space 	<ul style="list-style-type: none"> • Outdoor skating rink and onsite camping
24. Woodbend Community Hall	<ul style="list-style-type: none"> • Seating for 380 people without tables and 300 with tables 	<ul style="list-style-type: none"> • Ball diamond, playground, sports fields, onsite camping

PARKLAND COUNTY



LEGEND - COMMUNITY HALLS

- | | | |
|------------------------------------|--|--|
| 1 - Blueberry Community Hall | 9 - Golden Spike Community Centre | 17 - Muir Lake Community Hall |
| 2 - Bright Bank Community Centre | 10 - Graminia Community Hall | 18 - Parkland Village Community Centre |
| 3 - Carvel Hall | 11 - Hansen's Corner Community Hall | 19 - Rosenthal Community Hall |
| 4 - Clymont Community Hall | 12 - Holborn Community Hall | 20 - Sand Hills Community Hall |
| 5 - Duffield Community Hall | 13 - Keephills Community Hall | 21 - Smithfield Community Hall |
| 6 - Entwistle Community Hall | 14 - Magnolia Community Hall | 22 - Tomahawk and District Sports & Agra |
| 7 - Fallis Community Hall | 15 - Manley Goodwill Community Hall | 23 - Westland Park Community Hall |
| 8 - Garden Valley Community Centre | 16 - Moon Lake (Hoot Owl) Community Hall | 24 - Woodbend Community Hall |

LEGEND - OTHER FACILITIES

- 1 - Duffield Library
- 2 - Entwistle Library
- 3 - Keephills Library
- 4 - Seba Beach Museum
- 5 - Tipple Park Museum
- 6 - Tomahawk Library
- 7 - TransAlta Tri-Leisure Centre
- 8 - Wabamun & District Museum

3.4 CONCLUSIONS

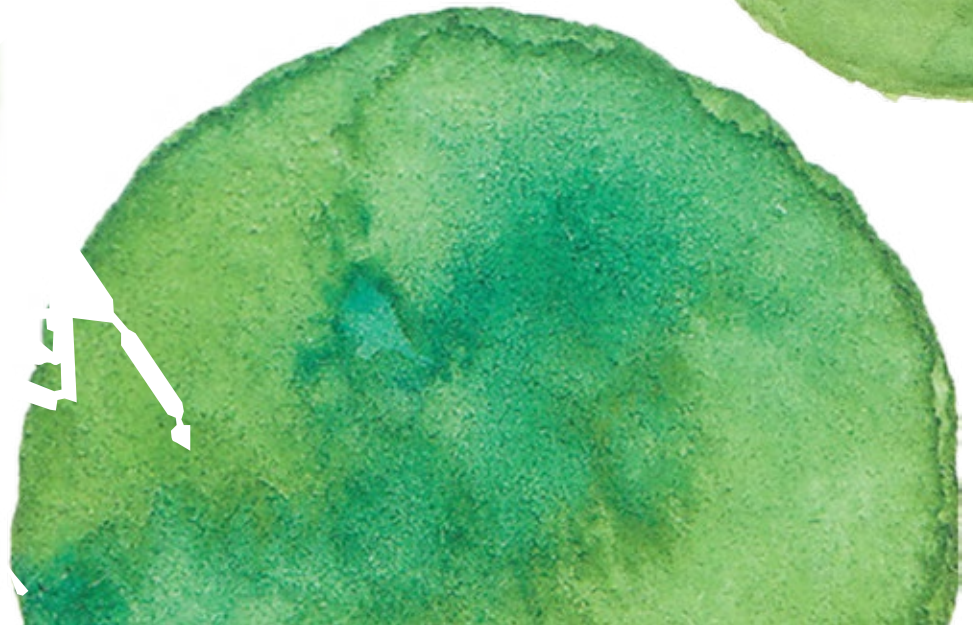
The tri-municipal region offers many spaces necessary to support foundational arts & cultural activities. There are numerous classroom type spaces as well as a large number of community spaces suitable for hosting performances. For more formal and larger performances in a purpose built space only the Horizon Stage in Spruce Grove is available. There are ample instances of potential gallery and showcase space for visual arts available in the region. There is however not a single dedicated space that serves as a cohesive arts & cultural centre in which a range of artists can come together to create in the region. Nor is there a smaller dedicated performance space to accommodate local performances and rehearsals. The availability of dedicated and purpose built creative spaces is limited although there are a number of multipurpose program and meeting rooms that can support the development of art and culture in the region.



ENGAGEMENT SYNOPSIS

A diverse program of community engagement was implemented to gather the thoughts and perspectives of community residents as well as local arts and culture stakeholders. A series of pop-up surveys were coordinated in the community and several invitational discussion sessions were convened. Each of these engagement sessions is described below along with their individual findings.

4



4.1 POP-UP SURVEYS

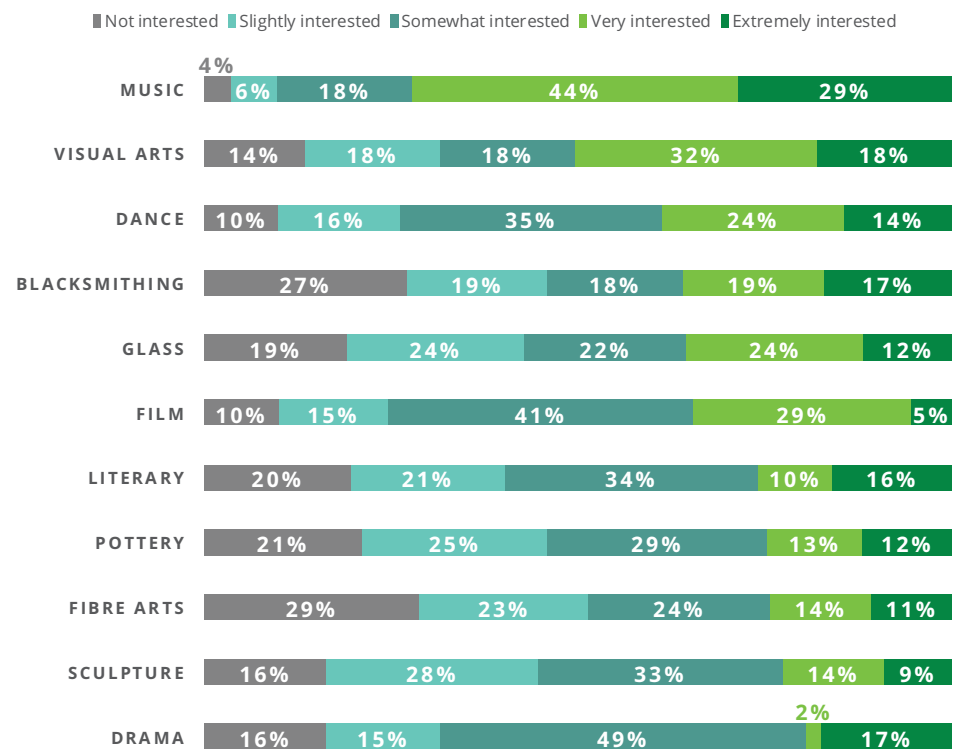
Three pop-up surveys were implemented as part of the engagement efforts. These were held at different events and at different times of the year to broaden the opportunity for a diverse range of community members to share their thoughts. Surveying occurred at the Farmers Market (June 8, 2018) the Blueberry Bluegrass Festival (August 3-5, 2018), and Christmas Light-Up (November 15, 2018). In total 113 responses were gathered; the findings are presented below.

FINDINGS

Respondents were asked to provide a top of mind comment when thinking about arts and culture in Stony Plain. A variety of answers were provided including specific spaces, activities, and events. Those most frequently cited included: the murals around town, the music events hosted, the Multicultural Centre, and the Pioneer Museum.

Respondents were provided with a list of arts and culture types and asked to indicate a level of personal interest in each. As illustrated in the accompanying graph, music was of greatest interest to respondents with almost all (96%) indicating some interest in that activity and approximately three-quarters (73%) saying they are very or extremely interested. Half (50%) of respondents said they are very or extremely interested in visual arts. Respondents showed the least interest in fibre arts with over one-quarter (29%) expressing no interest. The results are reflective of the events and programming most prevalent in the community. The Summer Sessions, Bluegrass Festival and Cowboy Poetry weekend are well attended and recognized. The success of the Potters Guild and the displays of local art in the downtown stores demonstrates community support for visual art.

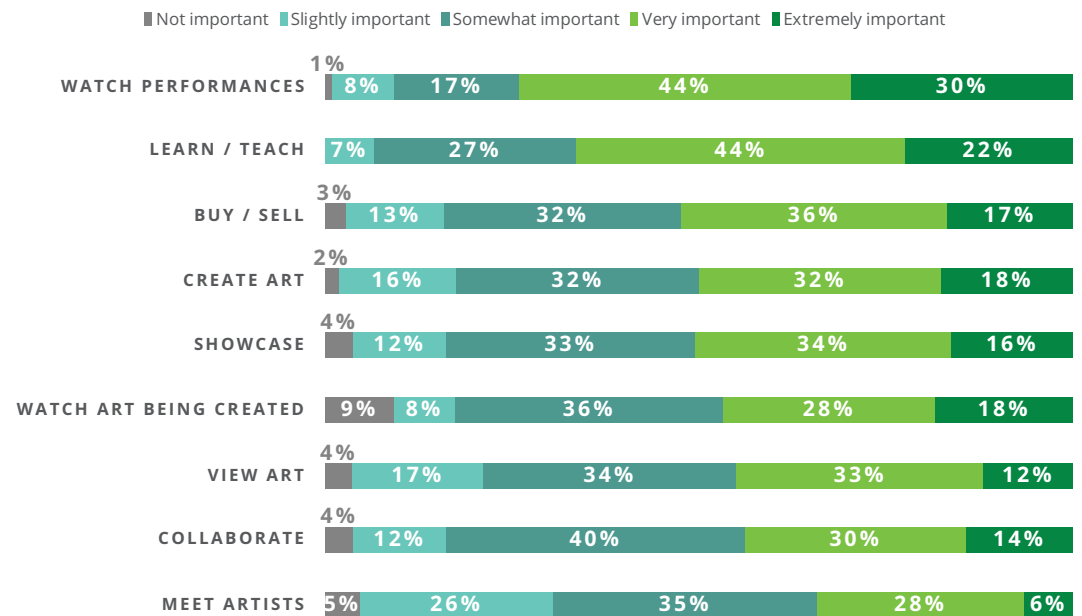
INTEREST LEVELS IN DIFFERENT TYPES OF ARTS & CULTURE ACTIVITIES



Respondents were given a list of different types of arts and culture spaces and were asked to indicate how important each space is to them in terms of being needed in the community. As illustrated in the graph, a space to watch a performance was the most important to respondents with approximately three-quarters (74%) saying that space is very or extremely important to have in the community. At least half (50%) of respondents identified spaces to learn / teach, buy / sell, create / showcase art as very or extremely important to have in the community. At the other end of the spectrum approximately one-third (34%) of respondents said space to meet artists is very or extremely important.

Finally a few respondents provided other comments including mention of the need for a cultural facility and the desire to see art from the Indigenous community included in cultural displays and facilities.

IMPORTANCE OF HAVING DIFFERENT TYPES OF SPACES IN THE COMMUNITY



4.2 STAKEHOLDER DISCUSSION SESSIONS

Several discussion sessions were hosted in 2018 that engaged arts, cultural, and heritage groups and individuals from the tri-municipal region; a follow-up survey allowed those unable to attend the scheduled sessions an opportunity to provide their thoughts. Approximately three dozen invested stakeholders provided input. The findings presented below includes the combined output from the discussion sessions and the follow-up survey.

FINDINGS

A series of questions were posed during each session. These questions are noted below followed immediately by a synopsis of responses to each question.

Q1. How do artists and art contribute to the quality of life in Stony Plain?

- Contributes to the aesthetics of the town.
- Gives meaning and spirit.
- Has a positive impact on individual and community health.
- Enhances community cohesiveness and helps break down barriers.
- Helps people feel more positive about the community.
- Encourages diversity in town.

Q2. How do artists and art contribute to the economy of Stony Plain?

- Artists live in the community so they pay for accommodation and purchase their household and personal needs in the same manner as all other residents.
- Art is a business. As such it contributes to the economy as any other business e.g. space to work, purchase of supplies and professional services, and so on.
- The brand of Stony Plain is enhanced through the arts community which helps attract visitors, residents, and businesses.

Q3. How could the Town of Stony Plain help artists?

- The creation of an artists' hub could create creative synergies.
- Assistance with promotion and advertising.
- Host events, workshops, and exhibitions at which the arts community could display and sell it wares and make the community more attractive as an arts enclave.

Q4. Could artists share space?

- Some combinations: quilters and weavers; fabric artists with costume makers with dancers; glassblowers and blacksmiths; writers with visual artists; filmmakers and visual artists. Some combinations may not work due to sound (noise), equipment, by products of production / creation.
- There is some specialized equipment and space needs for some artists.
 - » Some require large and high space, access to loading areas, spray booths with ventilation, stages, sound studios, variable lighting.
- Creativity is often enhanced through bringing artists together so some communal space would be beneficial.
- Additional secondary space such as classrooms, teaching, retail, and exhibition is more likely something that can be shared.

Q5. What types of space are needed?

- Studio, storage, exhibition, teaching, and retail spaces are needed. Exhibition space was by far the most commonly supported space.

Q6. What are some challenges and advantages related to space

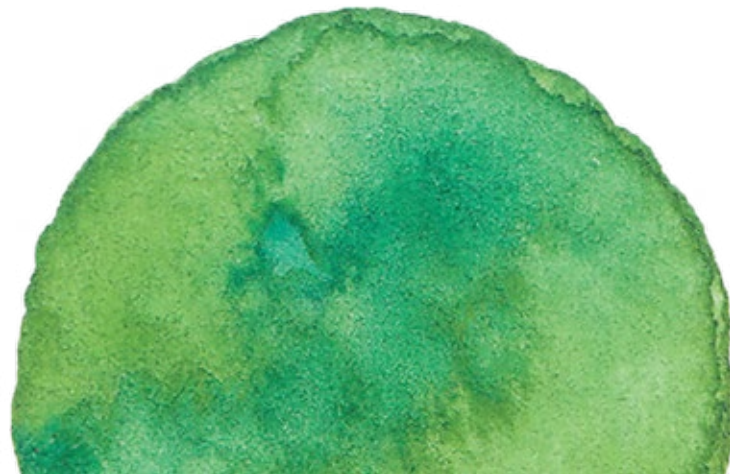
- Maintenance, management, storage were all recognized as challenges.
- Retail space presents its own challenges related to its management and operation.
- Costs to artists is a major concern – space needs to be affordable.
- The possibilities for collaboration and creation is considered a major benefit to the arts community and ultimately to the community.



4.3 CONCLUSIONS

The engagement provided insight regarding an arts & culture facility in Stony Plain from residents and stakeholders within the arts and cultural community itself. What is clear is the importance that arts and cultural activities, programs, events, and services have in the community from an economic perspective and a quality of life perspective. Some opportunities were identified in terms of facilities and spaces needed in Stony Plain to support the arts and culture sector. These included: classrooms, retail spaces, workshops / studios, and galleries.

The needs of the community, as they related to arts and culture space, have not changed dramatically from the recommended actions outlined in the 2012 Cultural Master Plan (CMP). Implementation of the CMP recommendations is essentially completed with the exception of those related to space. It is evident that the development of an art and culture space should remain a priority and that a cohesive facility that meets a wide range of arts and culture offerings should be the focus.



RECOMMENDED FACILITY PROGRAM

5



Based on the preceding information, a facility program has been developed for a potential arts and culture facility in Stony Plain. This program is described in the following table and would need to be further reviewed and validated in through subsequent engagement activities with the community and stakeholders as well through other aspects of research.

The subsequent research may conceivably have an impact on the overall facility program or the details of the different program areas. Other research that should be considered includes:

- Operational modeling;
- Operational costing;
- Community partnerships;
- Regional operational relationships.

Program Area	Description
Studio Spaces (creative)	<ul style="list-style-type: none"> Allows the creation of art in dedicated spaces Does not require the complete “tear down” after each use Includes some storage to support different groups making use of spaces ~1,200 sq ft (which may be configured into more than one space)
Storage Space (individual)	<ul style="list-style-type: none"> Individual artists often require significant storage space Space would be available for a limited number of individuals ~1,000 sq ft (which would be configured into separate secure storage areas)
Exhibition and Retail Space	<ul style="list-style-type: none"> Gallery space to showcase the work of artists and organizations working and performing in the building Gallery space to showcase work from others who live in the community Space doubles as a retail space as well ~1,000 sq ft
Classroom Space	<ul style="list-style-type: none"> Multipurpose classrooms in which arts & culture programs can be delivered 2 rooms @ 1,000 sq ft

Program Area	Description
Large Multi-Purpose Activity Space	<ul style="list-style-type: none"> Could hold activities and learning / teaching initiatives that cannot be accommodated in a classroom space Could be configured to hold small performances Serve as rehearsal space for performing artists Venue for large travelling exhibits ~4,000 sq ft
Main Entry / Foyer	<ul style="list-style-type: none"> Provides entry into the building Serves as an intermission space during any performances Allows for functions and events to be held in the space itself ~1,500 sq ft
Loading Dock	<ul style="list-style-type: none"> Allows the movement of larger pieces of art or items used in the large activity space
Administration Space	<ul style="list-style-type: none"> Office space provides space for someone who may manage the building including opening, closing, and booking Maintenance space would provide room for maintenance and janitorial functions ~300 sq ft combined

POTENTIAL FACILITY SOLUTIONS

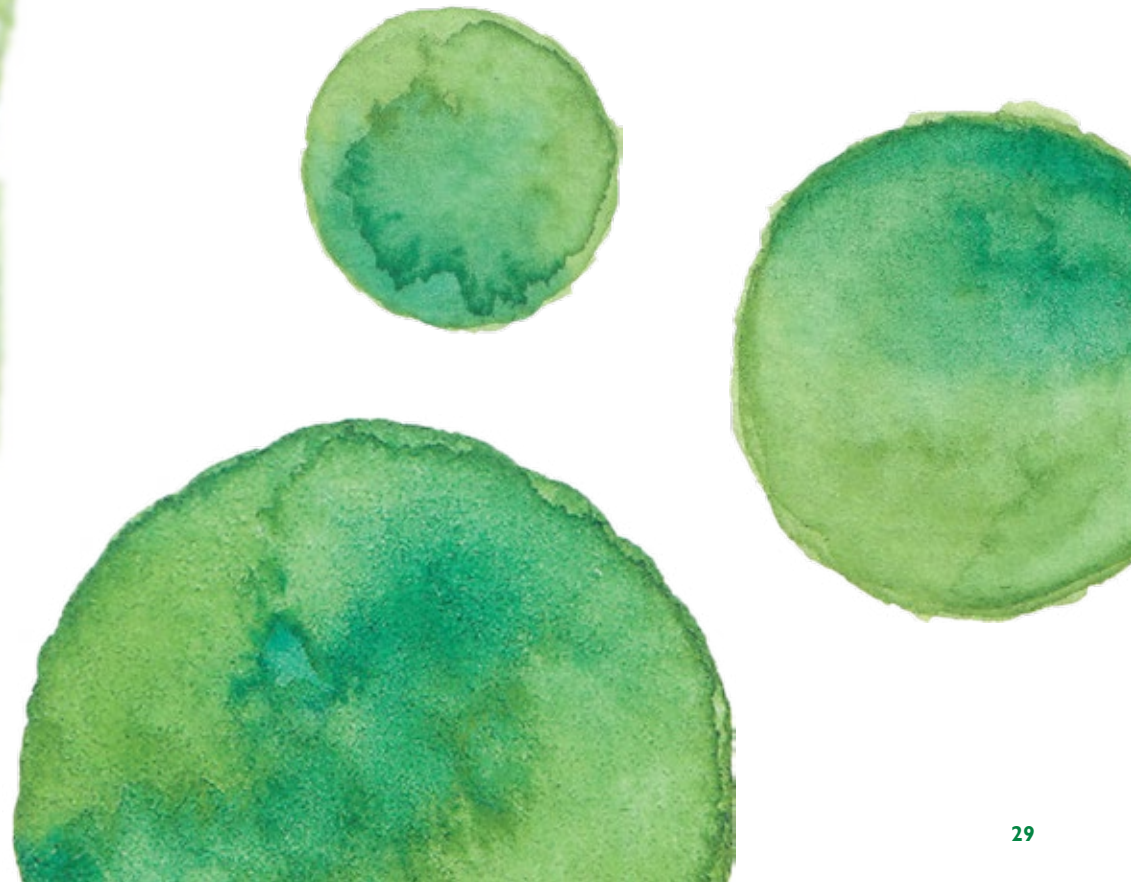
6



There are two primary solutions this report has focused on to provide the recommended arts & culture facility program in Stony Plain. The two options include:

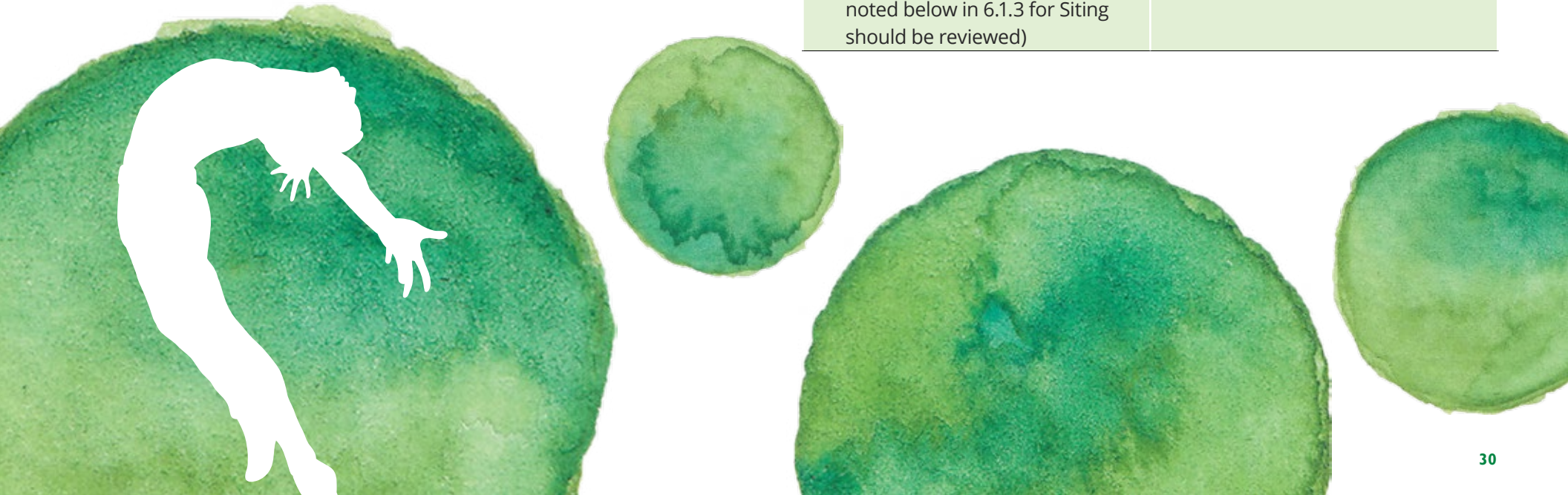
- the construction of a new purpose built space; or
- the renovation/repurposing of an existing building.

There are several considerations that need to be reviewed in more detail as a decision is made on the “best” approach to take including the availability of existing buildings and available sites for new construction. The table on the following page presents issues to consider as a decision advances related to one of the proposed solutions.



New Purpose Build Facility	
Pros	Cons
<ul style="list-style-type: none"> • Facility is designed to exactly meet the needs • New build enables most up-to-date approaches and technologies are incorporated • Enables all facility spaces to be optimally configured with one another • Complete flexibility can be accommodated with the appearance of the facility • No concerns about having to adjust the mechanical aspects of the building to accommodate a new purpose 	<ul style="list-style-type: none"> • Cost is typically greater than a repurpose or renovation • Available land may not be located in ideal location • Additional costs and work may be needed to service the site • Necessary and appropriately sized land may not be in Town's existing inventory and may need to be purchased

Renovated / Repurposed Existing Facility	
Pros	Cons
<ul style="list-style-type: none"> • Often a quicker development as the building already exists • Can be less expensive than a new build • Site is serviced • Parameters exist which can make design considerations quicker • Decisions related to site are minimized as the ability of the facility to best accommodate the facility program takes precedent (should there be multiple facilities that are equal in their ability to meet the facility program then the considerations noted below in 6.1.3 for Siting should be reviewed) 	<ul style="list-style-type: none"> • Limited by the existing structure including its envelope size and shape; its orientation and proximity to other buildings and spaces • More difficult and costly to include some design considerations • Ideal size of building may not exist • Available buildings may not be in ideal location • Renovation efforts may uncover previously unknown deficiencies that need to be addressed



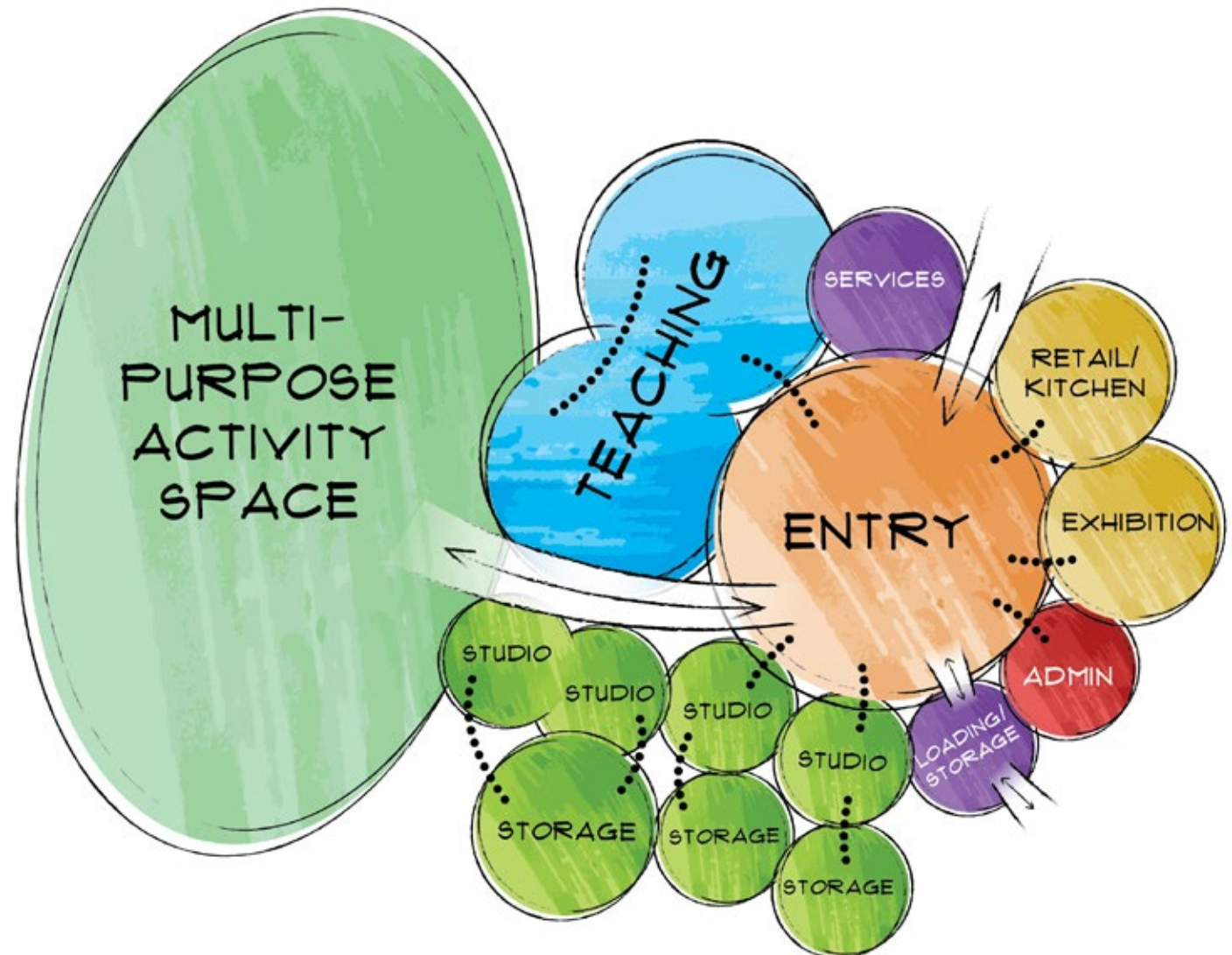
6.1 NEW BUILD OPTION

At this point the concept is in its infancy and the plan presented here is for illustrative purposes only to show relative sizes and adjacencies. Additional research and engagement would be needed to refine this concept. The associated capital cost estimate provides a magnitude of cost with a large (+30%) margin of error. Refinements to the concept are accompanied by refinements to the costing.

CONCEPT PLAN

The accompanying “bubble” diagram shows one concept with the program spaces and adjacencies. Refer to the Appendix for other concepts.

CONCEPT 1



ESTIMATED CAPITAL COST

Stony Plain Cultural Facility Program

Option 1 - New Construction

November 15, 2019

1.0 Arts Collaborative Space

	Capacity	Area (sq ft)		Cost / m2
.1 Studios		1,184	110.00	\$275,000
.2 Studio Storage		969	90.00	\$225,000
.3 Building Services		269	25.00	\$75,350
.4 Loading dock		269	25.00	\$75,350
.5 Administration /Bldg maintainance		323	30.00	\$75,000
Subtotal Net Areas:		3,014	280.00	
Component Budget		\$2,500		\$725,700

2.0 Public Space

2.1 PUBLIC AREAS

	Capacity	Area (sq ft)		Cost / m2
.1 Washrooms		269	25.00	\$75,000
.2 Main Entrance		1,076	100.00	\$948,331
.3 Circulation		603	56.00	\$168,000
.4 Teaching Space (2 classrooms)		1,938	180.00	\$540,000
.5 Exhibition Space		646	60.00	\$180,000
.6 Retail / Kitchen Space		646	60.00	\$568,999
.7 Multi-purpose Activity Space		4,306	400.00	\$1,200,000
Subtotal Net Areas:		9,483	881.00	
Component Budget		\$3,000		\$3,680,330

3.0 BUILDING TOTAL		1,161	\$4,406,030
BUILDING COST UNIT RATE		\$3,795.03	
Building Gross Up m2	58	\$220,302	
BUILDING BUDGET		220,301.50	\$4,626,332
General conditions	10%		\$462,633.15
Overhead and Profit	10%		\$462,633.15
TOTAL			\$925,266.31

TOTAL BUILDING BUDGET			\$5,551,598
------------------------------	--	--	--------------------

5.0 SITE DEVELOPMENT			
	Quantity	unit rate	Cost / m2
.1 Facility Parking	4000	\$55.00	\$220,000
.2 Landscaping	1	\$50,000.00	\$50,000
.6 Site servicing	1	\$75,000.00	\$75,000.00
TOTAL			\$345,000

6.0 GENERAL CONDITIONS / PROFIT		
General conditions	10%	\$34,500.00
Overhead and Profit	10%	\$34,500.00
TOTAL		\$69,000.00

Design Contingency	10%	\$589,659.78
Construction Contingency	10%	\$589,659.78
		\$1,179,319.57

7.0 PROJECT SOFT COSTS			
.1 Consultant fees	8%	\$477,247.83	\$477,248
.2 permits / Testing		\$200,000	\$150,000
TOTAL			\$627,248
TOTAL OPTION 1 PROJECT BUDGET			\$7,772,165

Budget does not include for purchase of Land

SITING CONSIDERATIONS

When making a decision regarding the appropriate site on which to develop a new facility there needs to be more thought given to the decision beyond land availability and land cost. These two considerations are not to be taken lightly; they can serve as the first filter through which a decision is made. The Town’s Old Town Community Plan (referenced in Section 2.1) provides direction related to facility siting. Within those guidelines there are a number of other criteria that should be considered when making a decision of this magnitude.

These criteria are described in the table. The siting decision can be facilitated through a formal scoring system in which the criteria are structured to enable decision makers to assign scores to criteria that are weighted differently. Ultimately a formal system the scoring becomes an input into the discussion around the decision. Undertaking the scoring however is a means to ensure those participating in the decision making consider the merits of the various sites. However it is completed, the identified criteria should be factored into the final decision. Note: the order in which the criteria is presented is not indicative of any relative measure of importance.

Criteria	Description
Proximity to Other Arts & Cultural Facilities	Ideally a new arts & culture facility would be nearby to existing arts and culture spaces and facilities to exploit potential synergies and to leverage and expand on the destination capability and attraction of the area. Having an enhanced arts & culture campus can benefit both artists and patrons (the public).
Transportation Connections	Ideally the site is served by major transportation corridors. This is necessary should a new facility be enhancing the arts & culture campus concept as noted above. As well it will service non-residents so should be relatively easy to find and access.
Active Transportation Connections	It is important that the site enable people to access it using non-motorized forms of transportation. This could mean that it is on existing or planned multi-use trail plans. It also may suggest that the site is centralized or near significant residential development.
Land Use	A site on which the existing zoning is acceptable to this type of public use is important. Perhaps more important is the land use of existing parcels. As a creative space the surrounding spaces should support and encourage that. This may suggest that situating a new arts & culture facility in an “unattractive” setting may be undesirable.
Expansion Capability	As the community grows it may be desirable to expand the facility. A site that could accommodate growth – whether that be enhancement in existing spaces, the addition of new spaces, or enhancement of the outdoor spaces – would be preferred.
Supports the Town’s Development Objectives	The Town of Stony Plain has development objectives that are presented in its MDP, Old Town Community Plan, and other plans. The preferred site should support these objectives.
Complementary Adjacent Uses	The facility will serve the needs of the local arts & culture community but it will also serve as a venue for visitation. Ideally the facility will be situated near to complementary uses. These could include restaurants, hotels, and other retail. Proximity to housing and services to support residents could be beneficial as well with the arts & culture facility servicing residents.

6.2 RENOVATION / PURCHASE EXISTING OPTION

Because the envelope of an existing building is unknown no concept plan is presented. The previously presented bubble concept illustrates relative sizes and adjacencies which may need to be adjusted depending upon the existing structure being considered. Additional work will have to be completed to understand the space inventory at the time facility development is being considered. This inventory will allow the Town to analyze the merits of a renovation or new construction. The siting criteria and the program area sizing will further assist in understanding and helping with the final space development decision.

ESTIMATED CAPITAL COST

Some assumptions can be made related to capital cost estimates associated with the development of an arts & culture facility utilizing an existing building. This estimate is presented in the following table. It is important to recognize that the estimate includes a sizeable (+30-40%) margin of error that will be refined as the facility concept is refined.

As well there are costs associated with existing buildings that can vary sizeably from building to building. Depending on the building, age and lack of original plans can present many unknown construction questions that have the potential to impact the overall budget. The +30-40% margin ensures the correct level of initial financial consideration is captured.



Stony Plain Cultural Facility Program

Option 2 - Renovation/Repurpose - Existing building (8,000 - 10,000 ft²)

November 15, 2019

1.0 Arts Collaborative Space

	Capacity	Area (sq ft)		Cost / m ²
.1 Studios		1,184	110.00	\$220,000
.2 Studio Storage		969	90.00	\$180,000
.3 Building Services		269	25.00	\$50,000
.4 Loading dock		269	25.00	\$75,350
.5 Administration /Bldg maintainance		323	30.00	\$60,000
Subtotal Net Areas:		3,014	280.00	
Component Budget		\$2,000		\$585,350

2.0 Public Space

2.1 PUBLIC AREAS

	Capacity	Area (sq ft)		Cost / m ²
.1 Washrooms		269	25.00	\$60,000
.2 Main Entrance		1,076	100.00	\$948,331
.3 Circulation		603	56.00	\$134,400
.4 Teaching Space		1,938	180.00	\$432,000
.5 Exhibition Space		646	60.00	\$144,000
.6 Retail / Kitchen Space		646	60.00	\$568,999
.7 Multi-purpose Activitiy Space		4,306	400.00	\$960,000
Subtotal Net Areas:		9,483	881.00	
Component Budget		\$2,400		\$3,247,730

3.0 BUILDING TOTAL		1,161	\$3,833,080
BUILDING COST UNIT RATE		\$3,301.53	
Building Gross Up m2	58	\$191,654	
BUILDING BUDGET		191,654.01	\$4,024,734
General conditions	10%		\$402,473.42
Overhead and Profit	10%		\$402,473.42
TOTAL			\$804,946.84

TOTAL BUILDING BUDGET	\$4,829,681
------------------------------	--------------------

5.0 SITE DEVELOPMENT			
	Quantity	unit rate	Cost / m2
.1 Facility Parking - included in existing facility	0	\$55.00	\$0
.2 Landscaping - included in existing facility	0	\$50,000.00	\$0
.6 Site servicing - included in existing facility	0	\$75,000.00	\$0.00
TOTAL			\$0

6.0 GENERAL CONDITIONS / PROFIT		
General conditions	10%	\$0.00
Overhead and Profit	10%	\$0.00
TOTAL		\$0.00

Design Contingency	10%	\$482,968.11
Construction Contingency	10%	\$482,968.11
		\$965,936.21

7.0 PROJECT SOFT COSTS			
.1 Consultant fees	8%	\$386,374.48	\$386,374
.2 permits / Testing		\$100,000	\$100,000
TOTAL			\$486,374

TOTAL OPTION 1 PROJECT BUDGET	\$6,281,992
--------------------------------------	--------------------

Budget does not include lease costs, or building purchase

REPORT CONCLUSIONS & NEXT STEPS

7



A broad program of research was reviewed and undertaken that led to the development of a program for an arts & culture facility. Including an examination of pertinent plans from the Town of Stony Plain as well as a review of the Cultural Master Plans from the City of Spruce Grove and Parkland County provided some insight into potential facility development considerations in Stony Plain.

The engagement and review of regional plans revealed the need for defined types of arts & culture spaces. The research also included the identification and inventory of existing arts & culture facilities in Stony Plain and the surrounding area. While there are many different spaces that may be used to support art and culture there is no distinct multi-use facility dedicated to art and culture.

Engagement with the public in Stony Plain as well with arts & culture stakeholders confirmed the importance of arts & culture in the region, its impact on Stony Plain's identity, and the potential economic impact this sector may have on the region.

A common theme emerged from the literary review and the engagement - a facility dedicated to the regions diverse art and culture community remains a priority.

The findings from the research were instrumental in the development of a program for an arts & culture facility for Stony Plain. This program could be manifested through a new build or the renovation of an existing facility. There are merits to both approaches including the potential for capital cost savings through the renovation or refitting on an existing building. High level estimates show that a new build is more costly than the renovation of an existing building (\$7.2M versus \$5.8M) including site costs to develop a full art and culture program space.

This study represents early work towards the development of a multi-purpose integrated arts & culture facility in Stony Plain. Additional work is needed to further explore the concept. This would include the following actions. (It should be noted that some of these steps may be addressed simultaneously. As well the order may differ from how they are presented below.)

- A decision needs to be determined regarding the preferred facility approach (i.e. new build versus renovation).
- The recommended facility program and the concept needs to be vetted with the community and stakeholders. While its development was based on input from these constituencies there is a need to review concepts being considered with them.
 - » The program and concept (along with its associated capital estimates) would need to be revised and adjusted to reflect the information gained through the subsequent engagement.
 - » More detail in the concept is implemented as well which is reflected in a more refined concept presentation and capital cost estimates.
- Potential siting of a new facility needs to be explored. If the preference is for a renovated building exploration of possible spaces needs to be completed.
- Operational costing estimates need to be developed for the refined concept - including revenue estimates.
- Operational and governance models for the facility needs to be explored.
- The involvement of regional partners needs to be explored and determined.

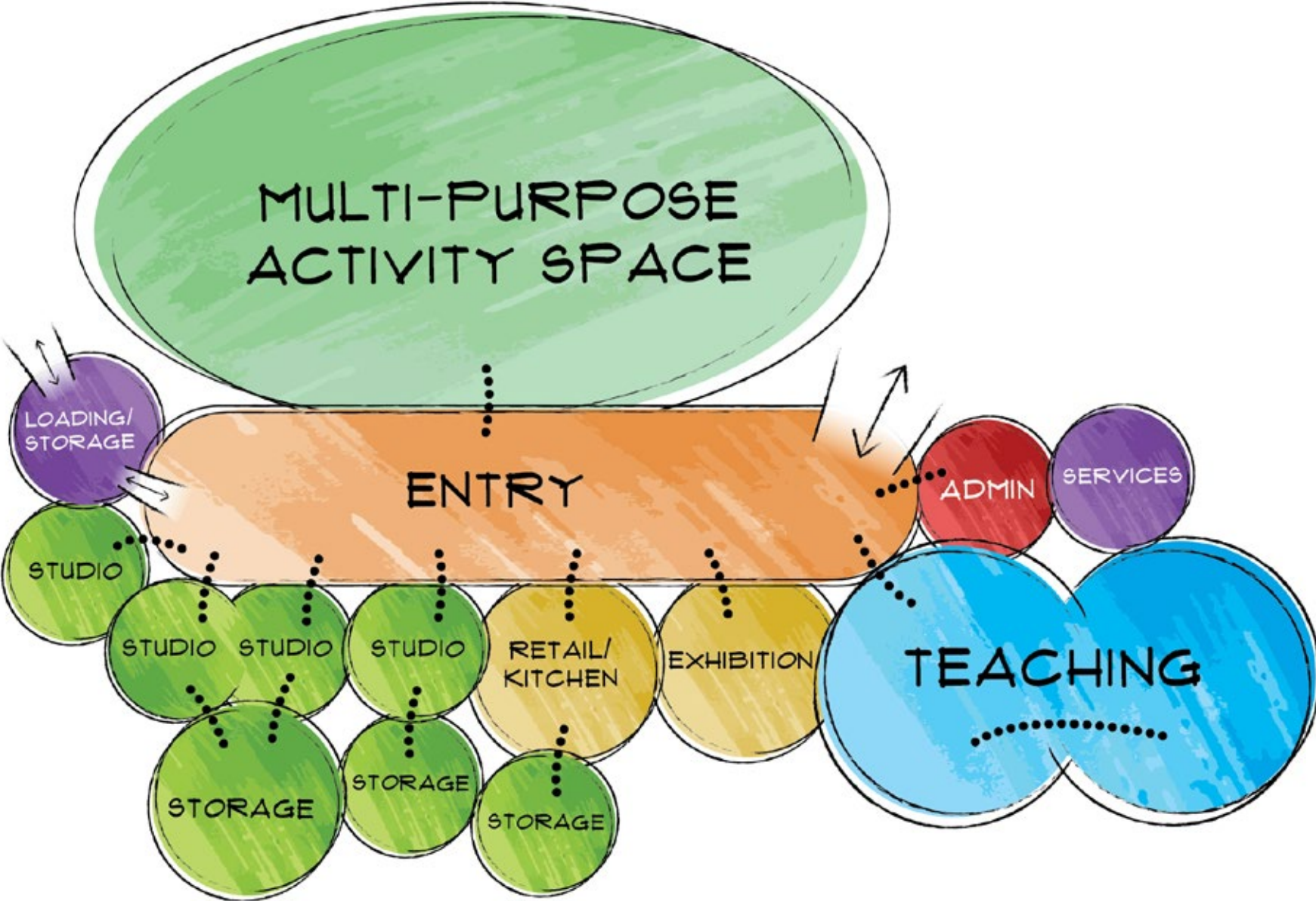


A

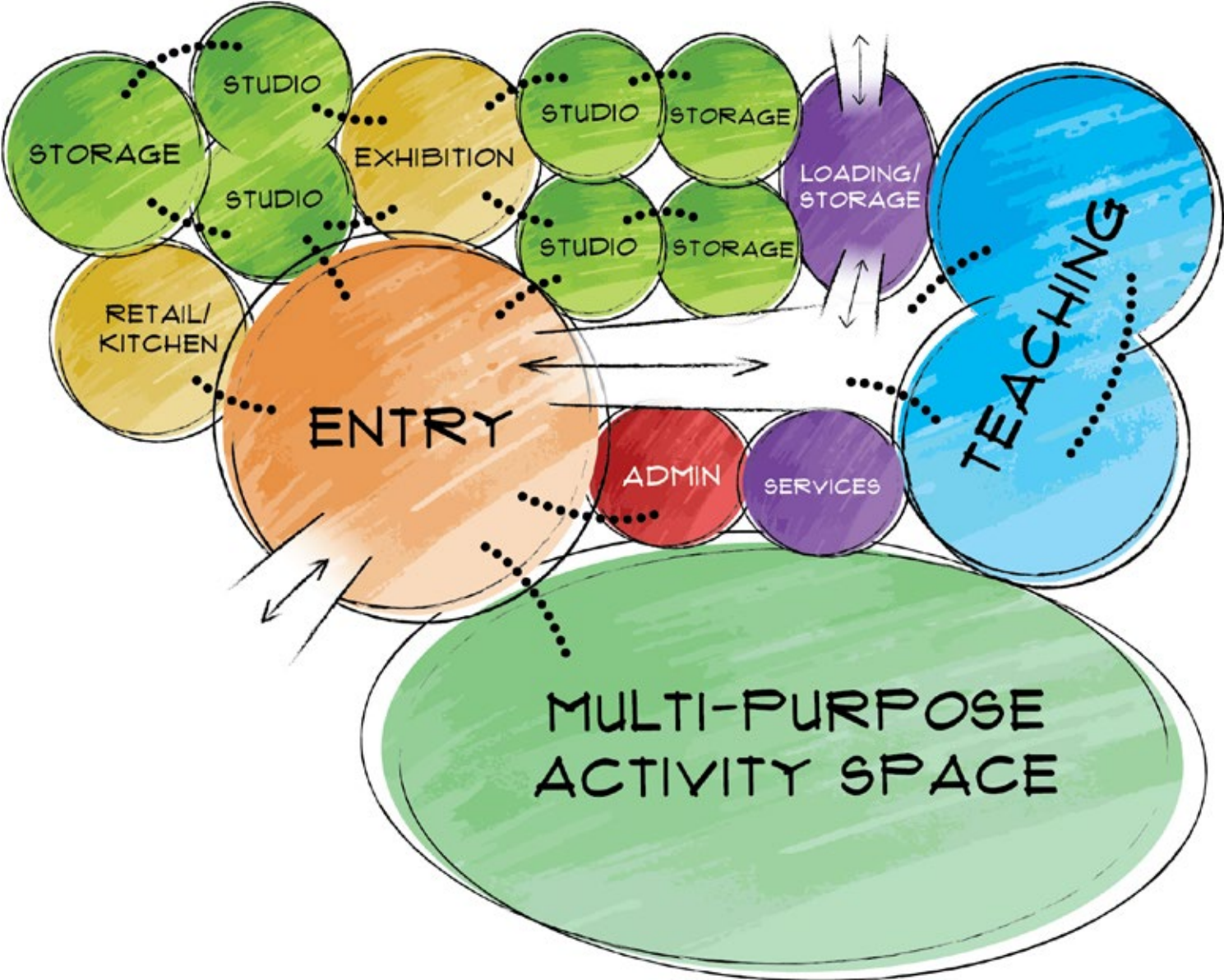
APPENDIX -
ADDITIONAL
CONCEPT
BUBBLE
DIAGRAMS



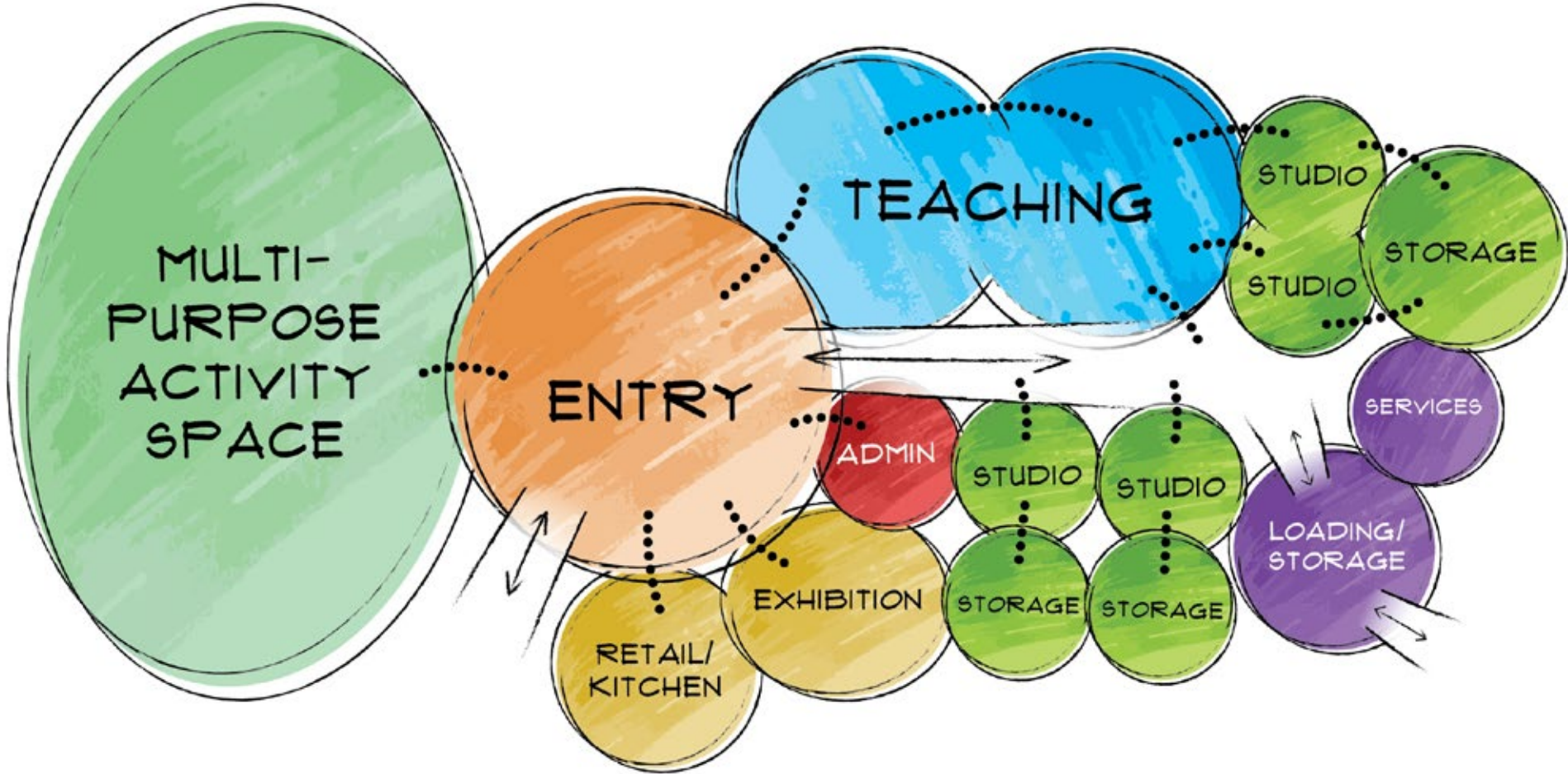
CONCEPT 2



CONCEPT 3



CONCEPT 4



CONCEPT 5

